

Lilla Nygatan 2

Inom Vallgraven 5:1
Entréplan & plan 2 (1 tr).

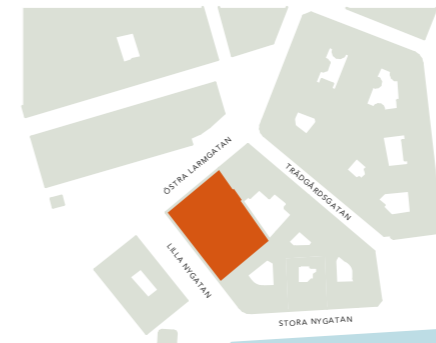
Idéskiss:
Butik / publik lokal

- Personalyta
- Pentry / paus
 - RWC, WC
 - Städ
 - Omkl
 - Lager / frd
 - Kontor

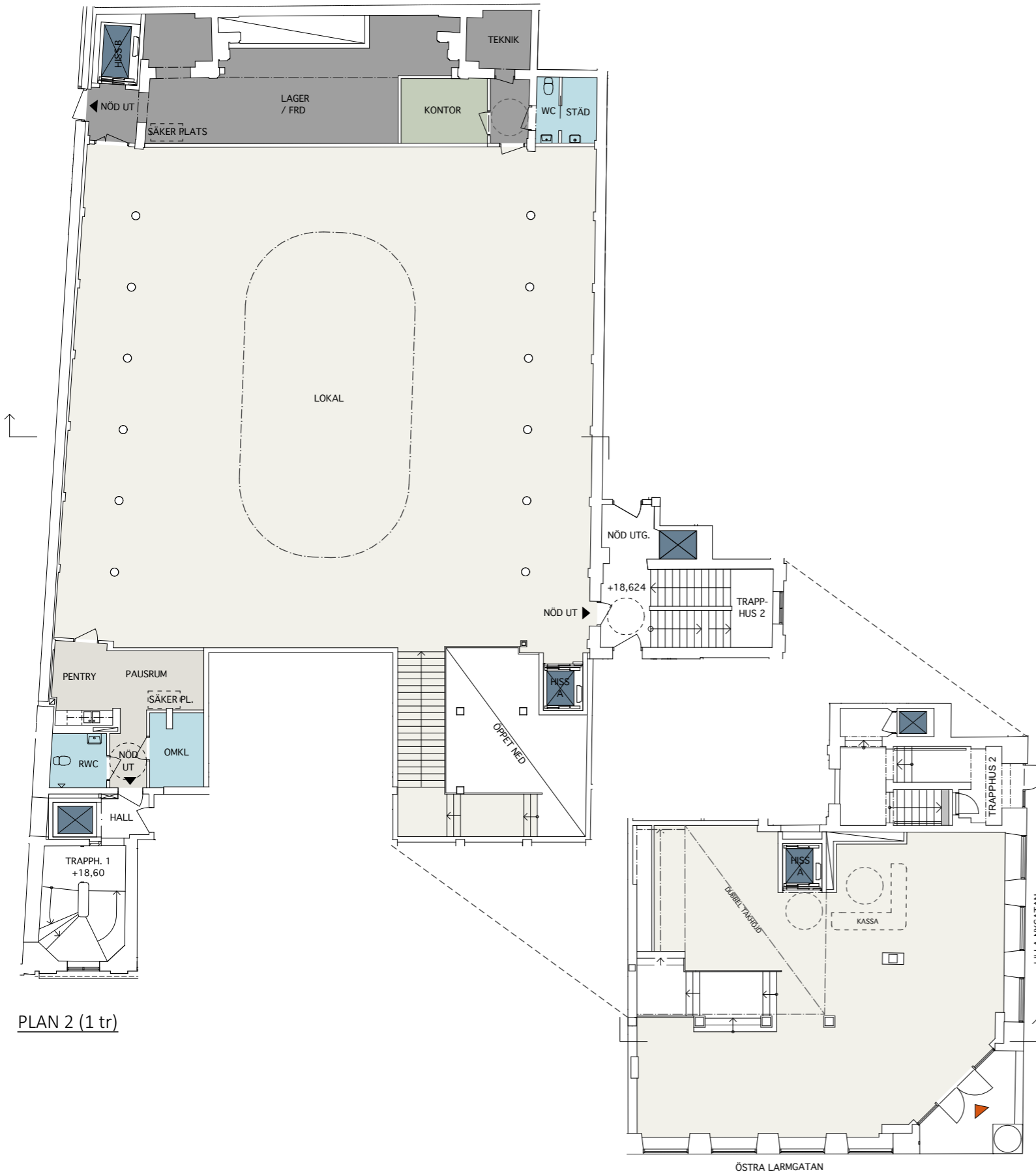
- Yta ca ~170 m² Entréplan
~581 m² Plan 2
= 751 m²



Lokalen i huset Sektion

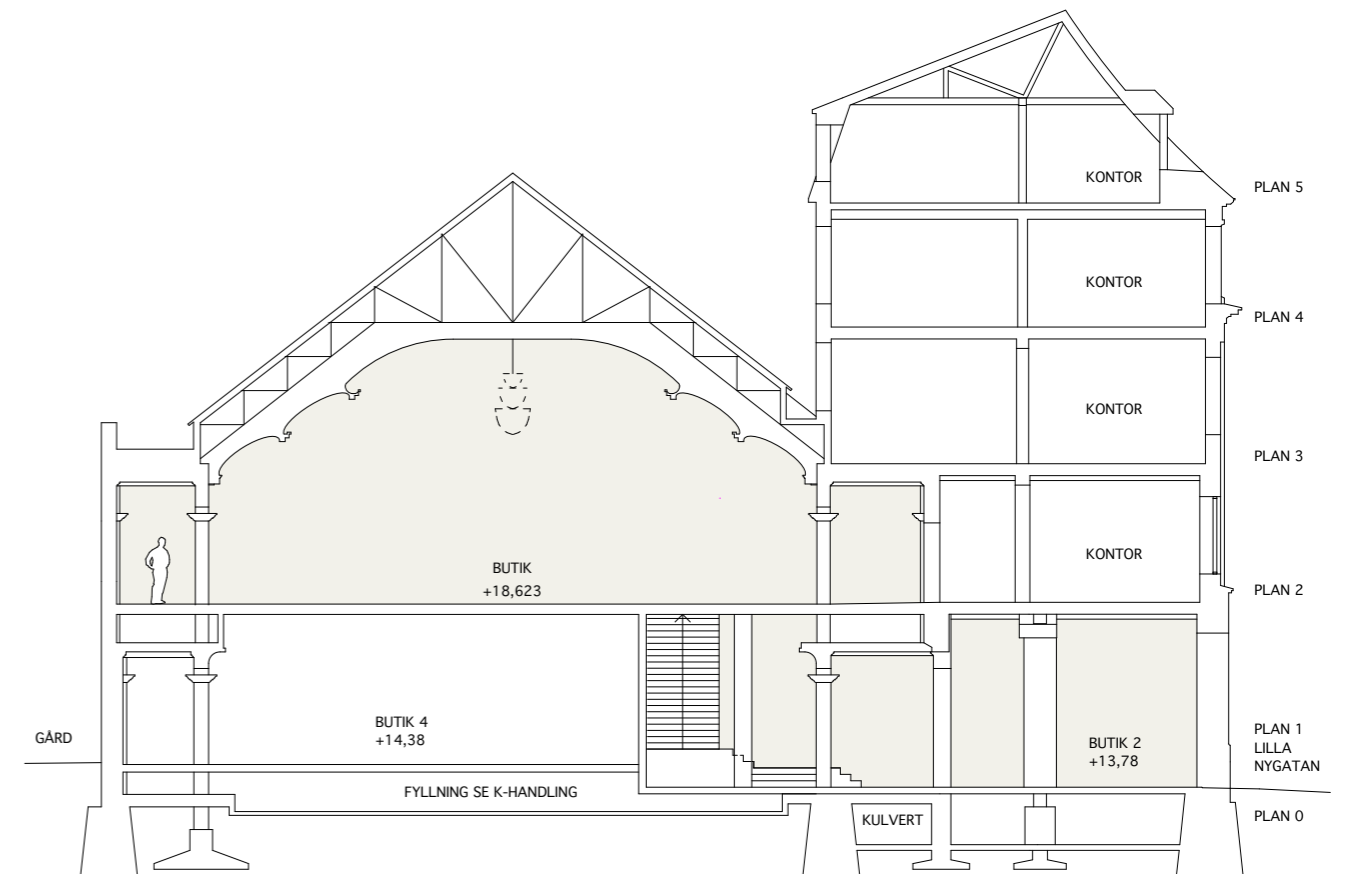


Situationsplan

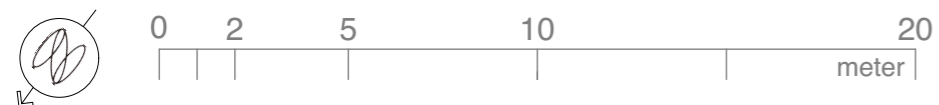


PLAN 2 (1 tr)

ENTRÉPLAN



PRINCIPSEKTION



Skala 1:200
(Papper A3)

SKISS 2024-11-15

GAJD® arkitekter

NOVIER