



**KONTOR 6:3, 685 m<sup>2</sup>**

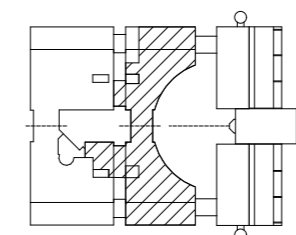
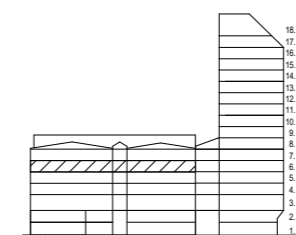
**64 arbetsplatser** varav:

- 48 i öppet landskap
- 16 projektplatser

ger c a 11 m<sup>2</sup> per person

**7 mötesrum** varav:

- 1 st mötesrum 8-12 p
- 3 st mötesrum 6p
- 3 st telorum 2p



**NIAM**

HANGÖVÄGEN 29  
 PLAN 6  
**LOKAL 6:3**  
 KV NEAPEL 3, BLOCK 1  
 skala 1:200 i A3

DATUM - 210329

Thule fastighetsutveckling  
 Östermalmsgatan 87E 114 59  
 SE-Stockholm, Sweden