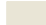

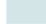


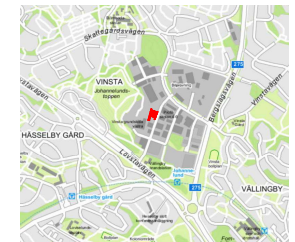
LOKALER

- Höglager, lok 1:4
- Kontor, lok 2:7, 2:9

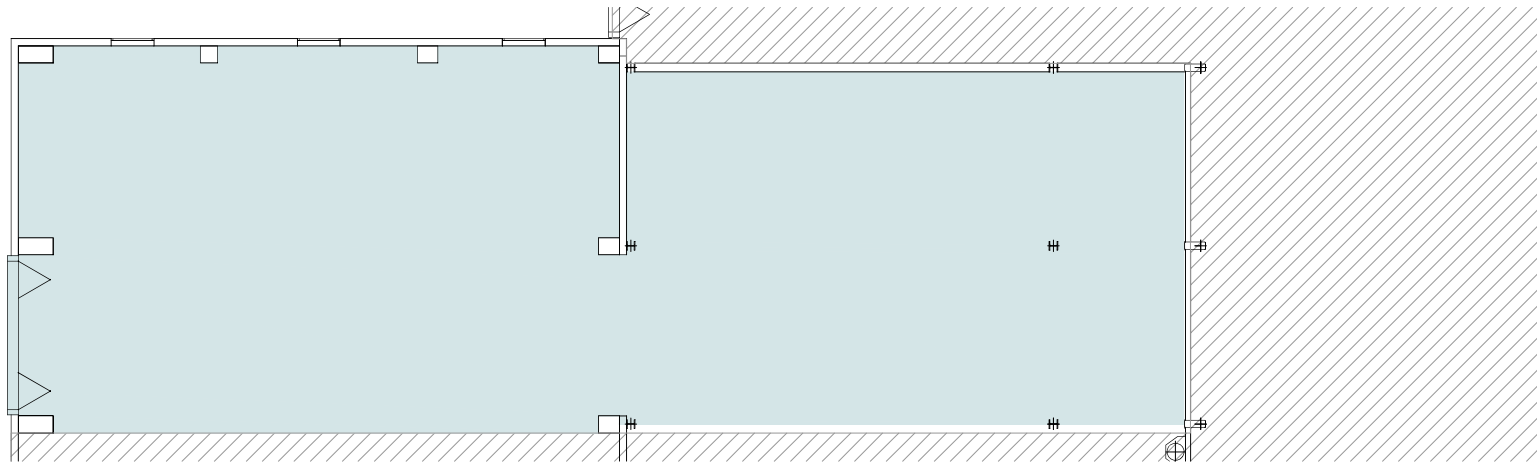
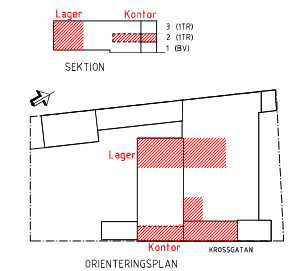
FÖRKLARINGAR

-  Entré, kommunikation
-  Arbetsplatser, mötesrum
-  Hygienrum, pentry, städ, förråd mm
-  Lager, verkstad eller liknande

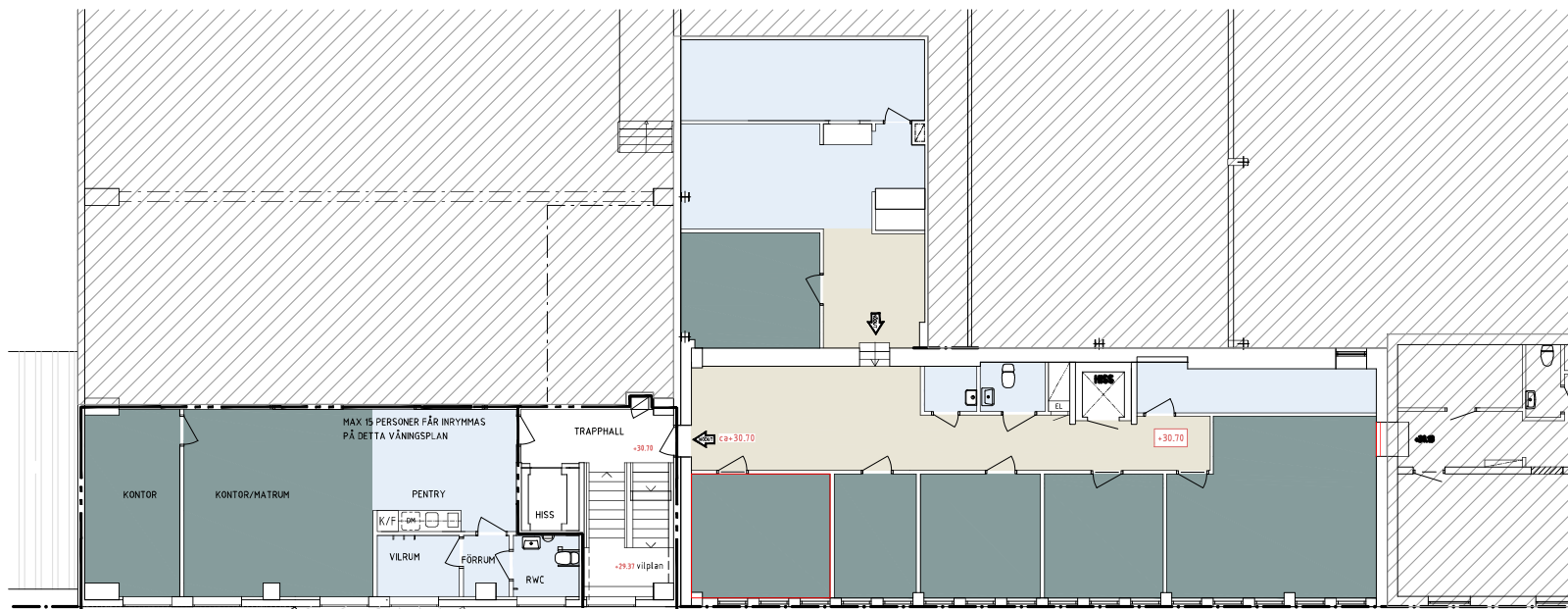
KARTA



ORIENTERINGSFIGUR



LAGER, PLAN 1/ENTRÉPLAN



KONTORSDDEL, PLAN 2/1TR

Krossgatan 31